

maxivac



SAVE £20
Was £59.99

800W ASH VACUUM
Now £39.99 plus £4.95 p&p

This lightweight specialised ash vacuum cleaner from Maxi Vac is perfect for ensuring that your fireplaces, stove and BBQ are kept spotless. It has a high-performance replaceable HEPA filter, filling level indicator to show you when the tank needs emptying and a flexible metre-long hose to make cleaning up ash and dust easier, ensuring a perfect clean even in the hardest to reach places.

The powerful 800W motor makes light work of any debris, vacuuming quickly and efficiently. The ash is stored in a large bagless 15-litre tank, so no expensive replacement bags are needed. It also features a durable aluminium nozzle, HEPA filter and a dust tool to get into small crevices where dust can build up. Measures D28 x H35cm. Power cord length: 200cm. A spare HEPA filter is also available to purchase.

G2698 Ash Vacuum
G2699 Spare HEPA Filter £6.99

ZENNOX



SAVE £40
Was £79.99

FOUR BLADE STOVE FAN
Now £39.99 plus £4.95 p&p

This eco-friendly stove fan has no running costs whatsoever as it uses the heat from your stove to generate the power it needs. The fan is silent in operation and automatically starts and runs faster as the temperature increases.

For best results, the stove fan should be positioned facing forward at the rear of the stove top, as far away from the flue pipe as possible. Designed to be used on the top of freestanding woodstoves with a surface temperature between 65 and 350°C.

As the base of the fan heats up, it creates the electrical pulse that turns the blade on the fan. The greater the difference in temperature of the metals, the greater the electrical output, meaning that your fan turns faster the more the stove (and therefore the base of the fan) heats up. Clean with a soft damp cloth after the fan has cooled sufficiently. Dimensions: L15 x W9.5 x H22.5cm. Working temperature: 65-350°C.

G3322 4 Blade Stove Fan

Call **0843 922 5001** (quoting 96088)
or visit **MirrorOffers.co.uk**

Call our UK-based sales team or visit our website now for thousands of great deals on clothing, kitchen, home, garden, health and hobbies

Our 'was' pricing refers to the original selling prices offered on our website www.offers.co.uk, and in our retail store between 22nd July - 20th October 2019. Calls cost 7p per minute plus your phone company's access charge. Allow 7 working days for delivery. If you are not happy for any reason we will accept returns of faultily used goods in sealed original packaging for full refund or replacement within 30 days. These goods are sold and supplied by BVG Group with whom you contract when you accept this offer.

Gardening club

with DAVID DOMONEY

features@sundaymirror.co.uk
daviddomoney.com
@daviddomoney
/daviddomoneytv

Q&A



Make your garden shine with our fabulous festive competition and you can win top prizes for brightening up your entire street

It's cold outside but gardens can still dazzle all through winter. And festive displays really give streets a lift on gloomy nights and shine a festive light on your spectacular shrubs and trees.

And now your displays can get the recognition they deserve, with the chance to win fabulous prizes in our new Illumination Street competition.

A decade ago, it was just a few hardy souls who went wild for Christmas. But with the advent of inexpensive, reliable LED lighting, gardens up and down the country are transformed into attention-grabbing winter wonderlands throughout December.

Some people ask for donations to charities, others are just happy to make their streets sparkle.

They can really cheer up communities as the nights draw in – and anything that gets people out enjoying their gardens is a good thing.

With this in mind, Cultivation Street – the national campaign for community and school gardening – is today launching a sister campaign, Illumination Street.

COLOUR AT CHRISTMAS

People often think that the use of their garden ends when summer does, but this just isn't true. Your garden has a wealth of goodness yet to give and, through this campaign, Britain's



Planting in winter can be really striking if you are creative

communities are encouraged to get outside and participate in all that nature has to offer in the run-up to Christmas.

Garden planting at this time of year can look really striking.

You just need to get creative, be it in the form of a spectacular holly bush full of bright, seasonal berries or cheerful Skimmia 'Rubella', with its colourful buds.

And don't forget the eye-catching coloured flowers of winter cyclamen and winter-flowering violas and pansies.

Cheery gaultheria is also a festive favourite, with rich foliage and bejewelling berries. Or try Viburnum x bodnantense 'Dawn' by your back door, to get a blast of beautiful winter fragrance.



My fence needs more defence

I put up a new fence but it's already looking silvery and tired. What can I do?

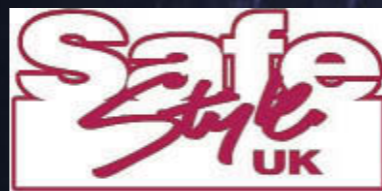
Daisy, via email
DAVID: Fences are usually treated with preservative to make them last and most people like the silvery look. But you can add your own preservative – there are a lot of varieties and colours. Check it's secure, too. At this time year only one loose panel can take out the lot.

TIP of the week

Blanch extra Brussels sprouts and pop them in the freezer. They will last up to a year and can be thawed to use for your Christmas dinner.

GET IN TOUCH

For loads more hints and tips on gardening visit daviddomoney.com or follow me on Facebook at @DavidDomoneyTV or on Twitter @daviddomoney



THE CATEGORIES

It doesn't matter how big your garden is, you can enter our great Illumination Street competition.

Best Front Garden Outdoor Display (Large)

For gardens of all sizes with displays that are the main feature.

Think festively festooned house fronts, shimmering sheds and twinkling trees – your garden is a canvas to bring Christmas cheer. Prizes: 1st wins £1,000, 2nd wins £500, 3rd wins £100

Best Front Garden Outdoor Display (Small)

Focusing more on Christmas tree tactics, the small front garden

category is open to gardens of all sizes featuring modest displays with heart.

Imagine frost-tinted rockeries, fencing a flicker with lights, sparkling patio pots and clever ways to brighten up dark corners and the smallest nook. Prizes: 1st wins £1,000, 2nd wins £500, 3rd wins £100

Best Community Christmas Display

Awarded to the project with the finest demonstration of club camaraderie and community creativity.

Some may look like starry skies,

others icicle-inspired spectacles, but the judges will be keeping their eyes open for serious neighbourhood flair, fun and frivolity.

Prizes: 1st wins £500, 2nd wins £250, 3rd wins £100

Best Front Door Christmas Display

Spread festive cheer with homemade wreaths, festive door hangings and garland-draped door frames.

Entrants are given two chances to win a prize – submissions are entered for a public vote as well as going

forward for the judges' top choice.

Judges' choice prize: 1st wins a new front door worth £1,500 courtesy of our sponsor Safestyle UK

Public vote: 1st wins £100, 2nd wins £50

Best Children's Window Display

This Christmas the Best Children's Window Display category encourages displays where kids have crafted their windows into a winter wonderland.

They could be illuminating ledges with lanterns, adorning sills with Arctic

embellishments or framing them in festive foliage. Entrants must be under 12 years of age.

Judges' choice prizes: 1st wins £200, 2nd wins £125, 3rd wins £75. 10 runners-up win £25 each

Public vote: 1st wins £100, 2nd wins £50

There are loads of ways to make gardens look great this winter – and getting involved with this Christmas campaign will make them dazzle. For more information on entering the competition, plus ideas and blogs, you can visit illuminationstreet.com – and share your images on social media using #IlluminationSt. The closing date is December 15, so don't miss out.

OFFER of the week

Get your garden ready for Christmas with miniature standard holly trees. Unlike holly bushes, these are on 40cm stems with a bushy head that cannot become rampant.

Holly aquifolium 'Argentea Marginata' has glossy green foliage with creamy edges and Holly 'Blue Angel' has dark green foliage. Both are self-fertile, producing masses of berries. Supplied on 35-40cm stem.

Buy one of each variety for £21.99 or both for £37.98, SAVING £6. Delivery within 28 days.

To order by debit/credit card call **0843 922 5000** quoting **SMTG079** or send a cheque (using blue or black ink), payable to 'Garden Offers' to: Mirror Holly Trees Offer (SMTG079), PO Box 64, South West District Office, Manchester, M16 9HY or visit mirrorgardenoffers.co.uk



GADGET



Clearing the way for those cosy nights in

With more of us fitting fancy log-burners in our homes, storage has become an issue.

The Rutland County Langham major log store can keep things in order. Its compact design means it can be erected next to the back door for quick access to logs without having to dash through rain or snow.

Built from robust pressure-treated timber, it is easy to self-assemble.

I found it for £84.99 in light green or rustic brown via greenfingers.com

only can your community benefit, it gives you a chance to enter Illumination Street's national competition, sponsored by the UK's No 1 window and door company Safestyle UK.

With a £5,000 prize pot up for grabs, winners will be announced to coincide with National Illumina-

tion Street Awareness Week, which runs from December 9 to 15. And anyone can enter.

STRIKING LIGHTING

Though outdoor lighting can look really remarkable, some gardens need extra advice and support. For instance,

those with an abundance of wildlife may need to buy LED lights with warmer hues so the displays don't disturb garden creatures.

The campaign works in partnership with garden-centre ambassadors and can point you towards a centre near you to help answer your burning

questions and support you with crafting the best Christmas display.

Matt Lewis, one of the ambassadors from The Old Railway Line Garden Centre in Brecon, Powys, said: "Christmas lights are a great way to put that twinkle back into your garden! "With so many types to choose from

including string, compact, cluster, connectable and character lights it can feel overwhelming.

"Our staff have a real passion for Christmas, with hours spent creating enchanting displays at our centre, so we can't wait to pass on that magic to our customers' gardens."